

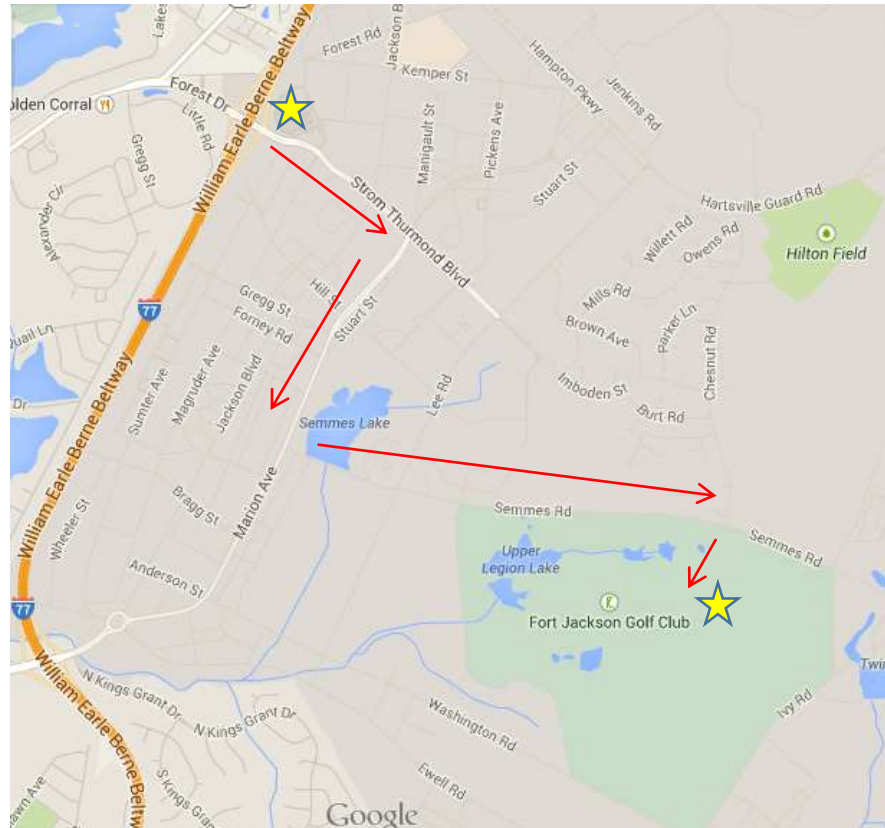
Directions to Ft. Jackson Golf Club

Civilian non-military affiliated guests are required to enter Ft. Jackson via Gate #2.

Drivers must have a valid driver's license, proof of insurance and current tags.

Speed limit on Fort Jackson is 25 MPH unless otherwise posted

Cell phones are prohibited while driving



FROM DOWNTOWN COLUMBIA

Take Forest Drive into Fort Jackson Gate #2. Once past security gate continue on Strom Thurmond Blvd. At fourth traffic light make a right onto Lee Rd. At second traffic light make a left onto Semmes Rd. Go down Semmes Rd. about 1 mile and make a right onto Chestnut Rd. into the Golf Club. You will see Golf Club sign as you make the right.

FROM I-77 NORTH/CHARLOTTE

Start on I-77 South bound towards Charleston. Take Exit#12 Forest Drive/Fort Jackson. Make Left at the light onto the bridge that crosses over I-77 leading into Gate#2. Once past security gate continue on Strom Thurmond Blvd. At fourth traffic light make a right onto Lee Rd. At second traffic light make a left onto Semmes Rd. Go down Semmes Rd. about 1 mile and make a right onto Chestnut Rd. into the Golf Club. You will see Golf Club sign as you make the right.

FROM I-77 SOUTH/I-26/CHARLESTON

Go towards Charlotte on I-77 North bound; Take Exit#12 Forest Drive/Fort Jackson. Make a right at the light leading into Fort Jackson Gate#2. Once past security gate continue on Strom Thurmond Blvd. At fourth traffic light make a right onto Lee Rd. At second traffic light make a left onto Semmes Rd. Go down Semmes Rd. about 1 mile and make a right onto Chestnut Rd. into the Golf Club. You will see Golf Club sign as you make the right.